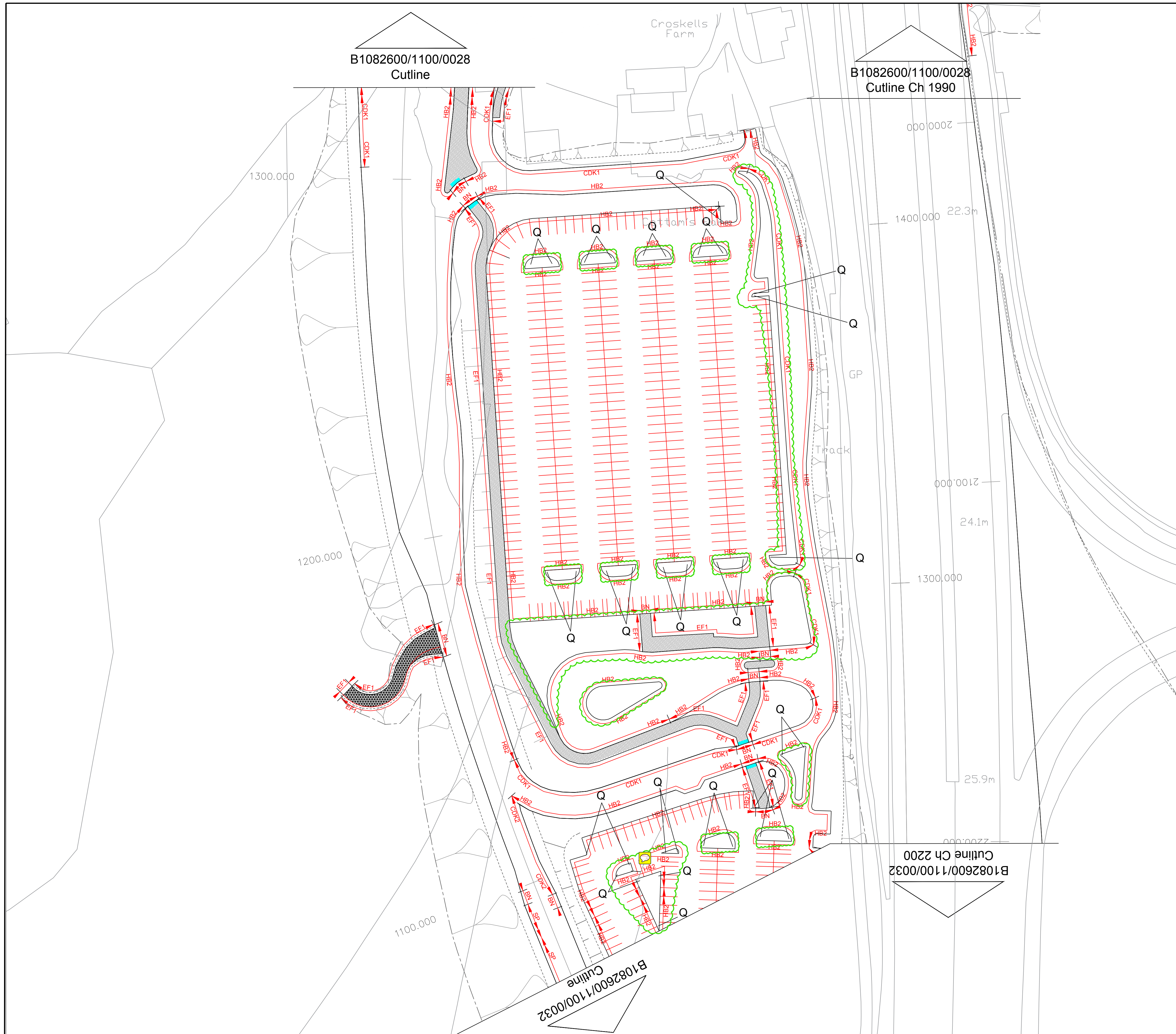


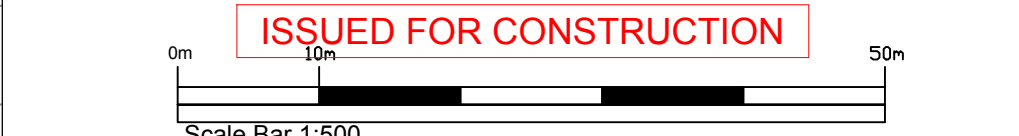
Appendix B



- NOTES
1. This drawing should be read in conjunction with the works Specification Appendix 11/1.
 2. For construction details see BS EN1340.
 3. Minimum footway width alongside pedestrian guardrails to be 1500mm
 4. Bus stop kerbing and paved area layouts to be in accordance with Lancashire Type 2 bus stop layout drawing).
 5. The dropped kerb lengths shown on this design include the taper kerbs as detailed in BS EN 1340.
 6. The 12.5° kerb lengths include any required transition lengths from the 45° kerbs as detailed in BS EN 1340.
 7. Crossings are to be set out prior to kerbs being laid.
 8. The blister studs (on the blister tactile paving) are to be aligned parallel with the direction of crossing.

KEY

125 x 255 x 12.5° Kerb	→ HB2
12.5° Combined kerb drain	→ CDK1
125 x 255 x 45° Kerb	→ SP
45° Combined kerb drain	→ CDK2
125 x 150 Dropped kerb	→ BN
50 x150 Precast concrete footway edging	→ EF1
37 x 100 Timber edging	→ EF2
12.5° Combined Drainage Kerb on Bridge Deck	→ BDU1
45° Combined Drainage Kerb on Bridge Deck	→ BDU2
Trief Kerbing	→ TR
455 x 255 45° Quadrant	Q
Type A Footway Construction	[Pattern]
Vehicle Footway Crossing (As special detail KL12)	[Pattern]
Structure Hardened Verge	[Pattern]
Concrete Sett Paving	[Pattern]
Reinforced Grass Paving	[Pattern]
Field/Private Access	[Pattern]
Bridleway construction	[Pattern]
Footpath Construction	[Pattern]
400 x 400 Red blister tactile paving	[Red Box]
400 x 400 Buff blister tactile paving	[Blue Box]



C2	NOV 15	For Construction	PS	SN
C1	MAR 14	For Construction	AP	RMT
C0	JULY 13	For Construction	PAA	RMT
1	JULY 12	For Approval	PAA	RMT
0	FEB 12	For Approval	SB	RMT
No.	DATE	AMENDMENT DETAILS	CHECKED BY	DRAWN BY

REVISIONS

Lancashire County Council Environment Directorate

Lancashire Highway Services



PROJECT TITLE
COMPLETION OF HEYSHAM TO M6 LINK

DRAWING TITLE
KERBS, FOOTWAYS & PAVED AREAS

DRAWN BY	SN	PROJECT No.	HC11063
CHECKED BY	PS	DRAWING No.	B1082600/1100/0030
DATE	Nov 2015	REVISION No.	C2
SCALE	1 : 500 @ A1		
CLIENT No.	B1082600		